

# CLUAIN BARRON CONSTRUCTION

---

## CAPABILITY STATEMENT

---





## COMPANY OVERVIEW

Founded in 2012, CBC was created to provide exceptional construction services to the civil and resources sectors in Western Australia. At the core of our operations is a strong focus on process management, enabling us to deliver quality outcomes efficiently and effectively. We are passionate about the well-being of our employees and committed to providing our clients with industry-leading service.

Our approach is grounded in robust safety protocols, customer satisfaction, and strict adherence to quality assurance standards. By integrating streamlined

processes and best practices, we ensure that every project is managed with precision, allowing us to deliver results on time and within budget.

Our highly skilled and experienced team is dedicated to optimizing project workflows, reducing inefficiencies, and ensuring clear communication throughout each phase of a project. This commitment to process management, combined with our focus on professionalism, integrity, and continuous improvement, ensures that we meet and exceed client expectations while maintaining the highest standards in the industry.



## OUR PEOPLE

At CBC, we firmly believe that our people are our most valuable asset, and we are committed to their ongoing training and development. This focus on continuous growth is critical to ensuring the successful delivery of every project we undertake. To maintain our high standards, we invest in comprehensive training programs that meet the stringent requirements of the Australian construction industry, ensuring our workforce is equipped with the skills and knowledge needed to excel.

Our Operations Manager, **Hugh McParlane**, plays a pivotal role in this commitment to quality and

development. With 30 years of experience across the construction sectors in Ireland, the UK, and Australia, Hugh brings a wealth of knowledge and leadership to our team. His self-driven approach and clear focus on quality ensure that all project developments are managed efficiently and effectively. In addition to overseeing projects, Hugh works closely with clients and construction staff and is deeply involved in the recruitment and development of our employees, reinforcing CBC's dedication to excellence across all areas of the business.

## CLIENTS AND PARTNERS

At CBC, building strong, long-lasting relationships with our clients is central to our success. We prioritize open communication, collaboration, and a deep understanding of our clients' needs to ensure every project is delivered to their exact specifications. By fostering trust and transparency at every stage, we not only meet but exceed client expectations.

Our commitment to quality service, on-time delivery, and ongoing support ensures that our clients view us as a reliable partner in their construction and resource sector projects. CBC values every partnership, and we strive to create a seamless, positive experience that leads to continued collaboration and mutual success.

CBC is also proud to have collaborated with METRONET. Our role in this transformative project underscores our expertise in managing substantial construction endeavors within the civil sector.

Leveraging our strong focus on process management and safety, we have efficiently supported the development of new rail infrastructures and stations. This partnership not only reflects our capability to handle large-scale projects but also our commitment to enhancing community infrastructure and supporting sustainable urban development.



"We are proud of our ongoing relationships as much as we are proud of the quality of our work."



## CAPABILITIES

CBC understands that ongoing success in the construction industry depends on delivering projects safely, on budget, and to the highest standards. With this in mind, we bring the following expertise:

### CONSTRUCTION



CBC has extensive experience across various sectors of the construction industry, particularly in the civil markets and resource sectors. Our highly skilled on-site team is backed by strong management expertise, ensuring projects are completed safely, on time, and to the highest quality.

### RESOURCE MANAGEMENT



CBC maintains an up-to-date inventory of all resources, enabling us to be fully prepared for mobilization when required. We prioritize workforce loyalty, satisfaction, and diversity, fostering a strong team spirit and cohesiveness that promotes job satisfaction and productivity.

### FINANCIAL EXPERTISE & PROJECT MANAGEMENT



Our financial advisor brings a high level of professionalism to CBC, ensuring accurate and up-to-date financial records are in place to support all operations. This ensures sound financial management across every project.

## OCCUPATIONAL HEALTH & SAFETY



(OH&S) The health, safety, and well-being of our workforce, subcontractors, clients, and visitors are CBC's top priorities. We ensure that ongoing training and experience keep our work environment safe. All projects are guided by CBC's comprehensive OH&S manual, procedures, policy, and Safe Work Method Statements (SWMS). This commitment has kept CBC incident-free since our inception.

## ENVIRONMENTAL RESPONSIBILITY

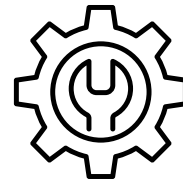


CBC is dedicated to maintaining a clean, healthy, and ecologically sustainable environment. We take responsibility for minimizing our environmental impact and actively strive to improve our environmental management through regular auditing, reviews, and updates. All CBC staff are responsible for adhering to these standards, ensuring our environmental goals are met across all operations.

"At CBC, success means more than completing projects — it's about doing so safely, on budget, and to the highest standards, while prioritizing people, safety, and the environment."

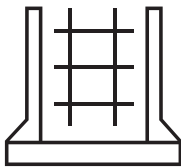
## SERVICES

CBC offers a comprehensive range of services that are integral to successful construction projects, particularly in the civil and resources sectors. These services are delivered by our highly experienced team, supported by our focus on process management, safety, and quality. Our expertise in the following areas ensures that we consistently deliver projects on time, within budget, and to the highest standards of professionalism and integrity. These services, combined with CBC's commitment to excellence in process management, safety, and environmental sustainability, allow us to offer a complete solution for construction projects, ensuring each phase is executed with precision and professionalism.



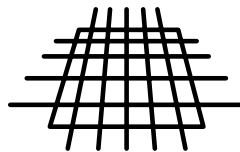
### Civil Works

CBC provides comprehensive civil works services, including earthworks, road construction, and infrastructure development. Our experienced team ensures projects are delivered efficiently, safely, and on budget, meeting the specific demands of each project.



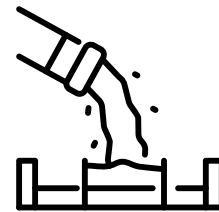
### Form Work

Our advanced formwork systems deliver precise structural molds, ensuring efficient and safe concrete construction tailored to project needs.



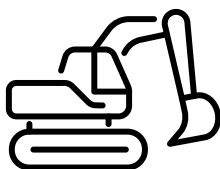
### Steel Fixing

CBC specializes in providing strong and reliable reinforcement, ensuring concrete structures meet stringent safety and durability standards.



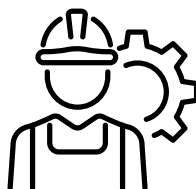
### Concrete Placement

CBC's expertise in concrete placement guarantees precise, durable results for foundations and structural work, managing large-scale pours with attention to quality and safety.



### Plant Hire

We offer a fleet of modern, well-maintained machinery, along with experienced operators, to support various project requirements, from earthmoving to excavation.



### Labour Hire

Our labour hire services provide skilled, experienced workers, ensuring teams are equipped to meet project demands and deadlines seamlessly.



### Storm Water drainage

CBC specializes in storm water drainage systems, ensuring effective water management and flood prevention. We install reliable systems that protect infrastructure and the environment, adhering to the highest safety and regulatory standards.



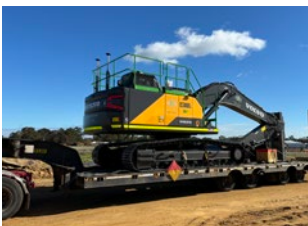
## PLANT HIRE



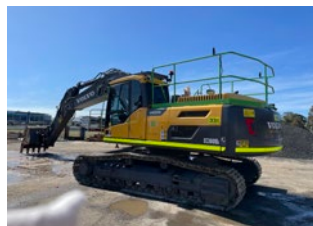
CBC offers a comprehensive and reliable plant hire service, providing a modern fleet of well-maintained machinery to meet the demands of any construction project. Our extensive range includes earthmoving equipment, excavators, cranes, and other specialized machinery, all available for short- or long-term hire. Each piece of equipment is regularly serviced to ensure optimal performance, safety, and reliability on site.

In addition to our state-of-the-art equipment, we provide highly experienced and skilled operators who ensure the machinery is used efficiently and safely. Whether for large-scale civil works or resource sector projects, CBC's plant hire capabilities ensure that your project runs smoothly, on time, and within budget. With a focus on flexibility and responsiveness, we're ready to mobilize quickly, supporting projects of all sizes and complexities.

## VEHICLES AVAILABLE FOR HIRE



30T HYBRID EXCAVATOR



30T GPS EXCAVATOR  
x3



16T WHEELED EXCAVATOR  
x2



14T GPS EXCAVATOR



5.5T EXCAVATOR



FLATBED BEAVER TAIL



POZI TRACK

## OUR PROJECTS



**West Angelas, Waste Water Services**  
Ring beam for waste water treatment tank



**Brockman 4, Waste Water Services**  
Containment slab for waste water treatment plant

## BMD CULVERT PROJECTS



Slab prep



Insitu Culvert works



Reo placement on suspended slab



Suspended slab culvert works



Ready for concrete



Reo for retaining wall



Pouring Base slab



Retaining wall reo



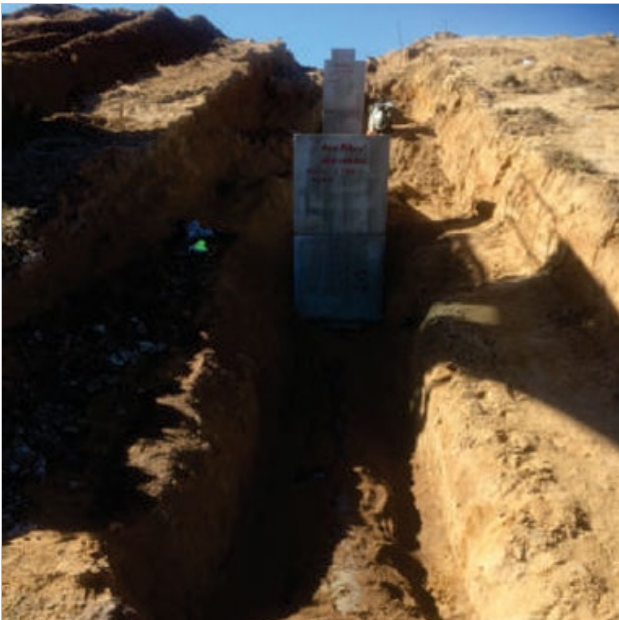
## MENAI CIVIL JORDAN SPRINGS PROJECTS



Pit building



Pit building



Slab prep for precast culvert units



Storm water install

## HENDERSON NAVAL BASE PROJECT



Wash-down slab prep



Wash-down slab completed

## ENVIRONMENT

CBC is committed to environmental sustainability and the safety of its operations. As part of our ongoing efforts to reduce our carbon footprint, we are currently trialing the use of HVO (Hydro-generated Vegetable Oil) in place of diesel across three of our vehicles in partnership with Curtin University. HVO is an eco-friendly fuel alternative that significantly reduces greenhouse gas emissions and supports cleaner, more sustainable operations.

By integrating greener technologies and fuels into our processes, CBC reinforces its dedication to protecting the environment while maintaining the highest safety standards. Environmental responsibility is a key element of our business practices, and we continually seek innovative ways to enhance the sustainability of our operations without compromising on safety or efficiency.

“At CBC, sustainability drives our innovation. By embracing eco-friendly solutions like HVO fuel, we’re reducing our carbon footprint while maintaining the highest safety and operational standards.”





## SAFETY

"Safety is our top priority. We continuously integrate innovative practices to protect our people and the environment, without ever compromising on operational efficiency."

At CBC, safety is a core value that drives every aspect of our construction operations. We are committed to ensuring the well-being of our employees, subcontractors, and clients, with all projects carried out in accordance with Australia's safety standards. Our approach includes comprehensive safety planning, regular site inspections, and continuous training to ensure a safe working environment.

With a focus on minimizing risks and promoting safety awareness, we have built a strong safety record. By integrating safe practices into every stage of our projects, we ensure that work is completed responsibly, efficiently, and without compromise, safeguarding both our people and our worksites.





#### CONTACT INFORMATION

CLUAIN BARRON CONSTRUCTION PTY LTD ABN 24 159 230 430

**Hugh McParlane**

Director

m | 0487 145 845

41 Roberts Street, Bayswater, Perth WA 6053

#### GENERAL ENQUIRIES

e | [hughmcparlane@cluainbarronconstruction.com.au](mailto:hughmcparlane@cluainbarronconstruction.com.au)

e | [info@cluainbarronconstruction.com.au](mailto:info@cluainbarronconstruction.com.au)

[WWW.CLUAINBARRONCONSTRUCTION.COM.AU](http://WWW.CLUAINBARRONCONSTRUCTION.COM.AU)